

Stressless® Dining

The perfectly balanced dining comfort



THE INNOVATORS OF COMFORT™

Original Collection
2018/2019



EKORNES®



The world's first comfortable dining chair – with BalanceAdapt™

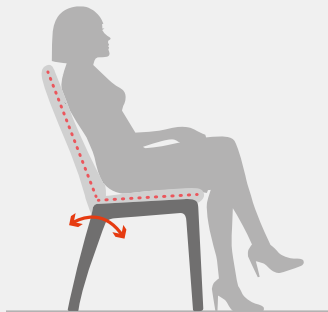
We have used our extensive experience from the world renowned Stressless® comfort to create a unique dining chair, featuring the innovative BalanceAdapt™ system.

Combined with the Glide-system, it allows the seat and backrest to adjust automatically to all your body's small movements.

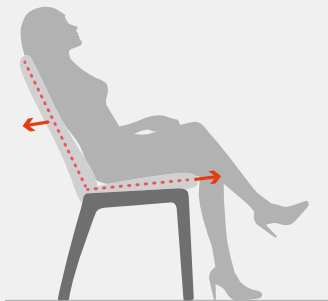
Feel free and have a perfectly balanced dining experience.



Comfortable eating position



Dynamic rocking function



Seat and backrest adjusts
to your movements



BalanceAdapt™





The perfect moment

Imagine a magical moment around the dining table with your loved ones, a moment you would like to last forever.

Feel the perfect balance between great food, laughter and good conversation all in comfortable dining chairs making for a memorable moment

Stressless® – the perfectly balanced dining comfort.

Stressless® Rosemary Low D200 dining chairs, shown in Paloma Taupe/Natural Oak.









High or low

Stressless® Dining chairs give you several options for style and comfort. All models can be supplied with either a high or a low backrest.

Stressless® Laurel High D100 dining chairs, shown in Calido Dark Grey/Walnut.
Stressless® Madeira T200 dining table, shown in Walnut.







Stressless® Rosemary High D100 dining chairs, shown in Calido Light Grey/Whitewashed Oak.
Stressless® Toscana T100 dining table, shown in Whitewashed Oak.



It's up to you

Stressless® dining chairs offer you the opportunity for personalisation. You can choose from two exclusive designs for the chair cushions : Stressless® Laurel and Stressless® Rosemary.

You can choose between two leg designs and an exciting range of textiles and leathers. All chairs are supplied with a high or low backrest.



STRESSLESS® LAUREL



STRESSLESS® ROSEMARY



Valid from the date of purchase, and subject to online registration on stressless.com or stressless-world.com, no later than six months from the date of purchase.



Stressless® Laurel High D200
dining chair, shown in
Paloma Taupe/Natural Oak.

Choice of legs

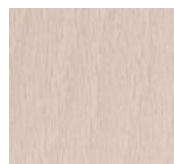
The dining chairs are available with two different leg designs and four different wood finishes: Whitewashed Oak, Natural Oak, Walnut and Black.



CHAIR LEG D100
– rounded leg of solid wood



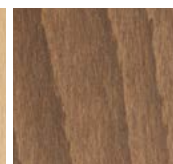
CHAIR LEG D200
– slanted laminate leg



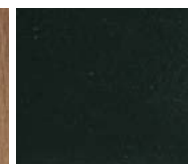
WHITEWASHED OAK
stained and
varnished



NATURAL OAK
varnished



WALNUT
stained and
varnished beech



BLACK
stained and
varnished beech

Fabrics and leather

The fabric and leather collections for Stressless® Dining are based on several existing colours and qualities used for our other Stressless® models.

This makes it easier to find combinations to match the rest of your interior.

Stressless® textile collection

Nothing is left to chance when choosing our range of fabrics and leather. All raw materials must meet strict requirements and our high standards ensuring our specially selected fabrics meet the furniture industry's strictest requirements. Stressless® fabrics are produced in accordance with strict environmental conditions and must pass international tests for durability, light fastness, pilling resistance, fire safety and colour fastness. Choose from our wide selection of colours to match your interior.

Please note that colour changes will occur over time as a result of use and the effects of exposure to light. You should always protect your furniture from direct sunlight. To prolong the life and appearance of your dining chairs, the fabric upholstery should be regularly vacuumed, professionally dry-cleaned or cleaned with our approved Stressless® Fabric Care kit.

Ivy



Dahlia



Not available in Australia

Grace



Linden



Silva



Iris



Crocus



Jasmine



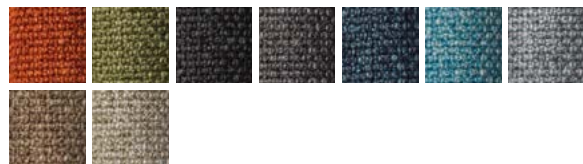
Not available in Australia

Verona



Not available in Australia

Karma



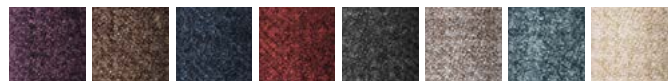
Calido



Faron



York



Not available in Australia

Dinamica



Stressless® leather collection

Stressless® is one of Europe's biggest consumers of leather. We buy our leather from selected tanneries all over the world. Our own inspectors help to select the leather we use, working in accordance with international quality assurance standards. Buying Stressless® leather furniture means you benefit from all the experience we have gained over the years. Our leather is manufactured according to current laws, guidelines and recommendations relating to its utilisation properties, as well as its use and content of chemicals and other substances. We work in partnership with recognised international institutions operating in this line of business to ensure we always stay up to date with matters relating to health, safety and the environment.

Batick is a corrected, pigment-improved and grain-embossed upholstery leather, which has had most of its natural marks removed. Batick may have a two-tone colour effect to liven up the surface. Batick is resistant to fading, although changes in colour will occur over time due to use and exposure to light. A protective layer of lacquer simplifies cleaning. Simple cleaning, excellent utilisation properties and a favourable price make Batick a good choice.



Paloma is a slightly corrected leather with a combination of dyes and pigments that smoothes down some of the structure (the grain pattern) of the leather. The grain structure in Paloma may, however, vary a little at some parts of the furniture and also minor colour nuances may appear in the leather. Natural marks, scars and insect bites are natural and will appear in Paloma. A thin coat of lacquer gives Paloma some protection and simplifies cleaning, but Paloma does not have the same heavy-duty quality and protection as Batick. Due to its soft, natural and comfortable expression, Paloma is a very popular choice.



Stressless® Leather and Fabric Care kits

Ekornes offers its own leather and fabric (including microfibre) care kits to match the high quality of our furniture.

The Stressless® Leather Care kit (medium, large) contains a leather cleaner and protection cream. Stressless® Leather Care Wipes are also available. For maintenance, and to make the leather more resistant to stains, the protective cream should be applied to all your chair's leather surfaces when new. We recommend that you clean the leather with Stressless® leather cleaner at least once every six months to keep your leather looking its best, removing stains regularly and ensuring long leather life. Always apply the protective cream after cleaning.

The Stressless® Fabric Care kit contains a fabric cleaner, a stain remover and an Ox cleaner. This kit contains everything you need to clean your chairs in minutes without removing the fabric cover. For resistant stains, use the fabric cleaner together with the stain remover and Ox cleaner.

These are the only cleaning products recommended by Ekornes. Ekornes accepts no responsibility if cleaning products other than those recommended by Ekornes are used and cause damage to the leather or fabric.



Dining chairs



All of our dining chairs feature the unique BalanceAdapt™ System.

Stressless® Laurel



Stressless® Laurel Low D100

W: 50 H: 90 D: 56
Seat height: 48



Stressless® Laurel High D100

W: 50 H: 105 D: 57
Seat height: 48



Stressless® Laurel Low D200

W: 45 H: 90 D: 56
Seat height: 48



Stressless® Laurel High D200

W: 45 H: 105 D: 57
Seat height: 48

Dining tables

The new tables from Stressless® Dining have a functional and beautiful design – perfect for accommodating both informal and important gatherings.

Make the combination of your choice!



T100

Stressless® Madeira/Stressless® Toscana

W: 175 H: 73 D: 95

Choose tabletop

Choose between Stressless® Madeira which has a rectangular shape or Stressless® Toscana which has a slightly curved shape. Both versions can be expanded using leaf inserts.



Stressless® Madeira



Stressless® Toscana

Choose legs

The table tops can be combined with two different leg solutions; T200 in veneer and with straighter edges than the T100, which are more rounded and made of solid oak or beech.



T200



T100

Stressless® Rosemary



Stressless® Rosemary Low D100
W: 50 H: 90 D: 56
Seat height: 48



Stressless® Rosemary High D100
W: 50 H: 105 D: 57
Seat height: 48



Stressless® Rosemary Low D200
W: 45 H: 90 D: 56
Seat height: 48



Stressless® Rosemary High D200
W: 45 H: 105 D: 57
Seat height: 48

Choose finish

Both tables are available in natural oak, whitewashed oak or walnut, and with a matt-varnished topcoat.



Whitewashed Oak



Natural Oak



Walnut, stained beech

Choose leaf inserts

The dining tables are supplied with the option of two different systems for extending the tables.

1. An integrated pull-out system with a leaf of 80 cm that automatically rises when you pull the end of the table. The leaf sinks again when you push the table end.



2. Up to two leaf inserts* of 50 cm each that can be stored under the table top when not in use.



Please note: Colour differences may arise as the leaf inserts may not be exposed to sunlight as much as the rest of the table. * The leaf inserts are manufactured and supplied separately, and so will not have 100% matching veneers.



Made in Norway
since 1934

The pleasure of comfort

Since 1934 we have had the pleasure of filling homes all around the world with comfort. Our longevity has helped to make Stressless® one of the best-known brands in the furniture industry. Our Ekornes colleagues all share a passion for detail and innovative solutions, this commitment enables us to continually invent new systems designed to give your body the best possible sitting experience – whilst giving your home the ultimate decor. Yes, we may be 80 years old, but we never stop pushing the boundaries and questioning the limits of what is possible in terms of ultimate comfort and the most spectacular designs.

There are many reasons why our recliners, sofas and dining chairs are so unbelievably comfortable – every piece of furniture is the work of highly-skilled staff, the effective choice of materials and innovative solutions. The landscape that surrounds us also plays a significant role in defining our products. Norway's majestic peaks and endless fjords set our minds at ease and are the perfect antidote to stressful days. If you have not yet visited the fjords but would like a taste of what they offer, we recommend taking a seat in a Stressless®. It may well be the closest you'll ever get to the bliss of pure comfort.

Stressless® is a registered trademark
owned by Ekornes ASA, Norway.

EKORNES®

www.stressless.com

Retailer: